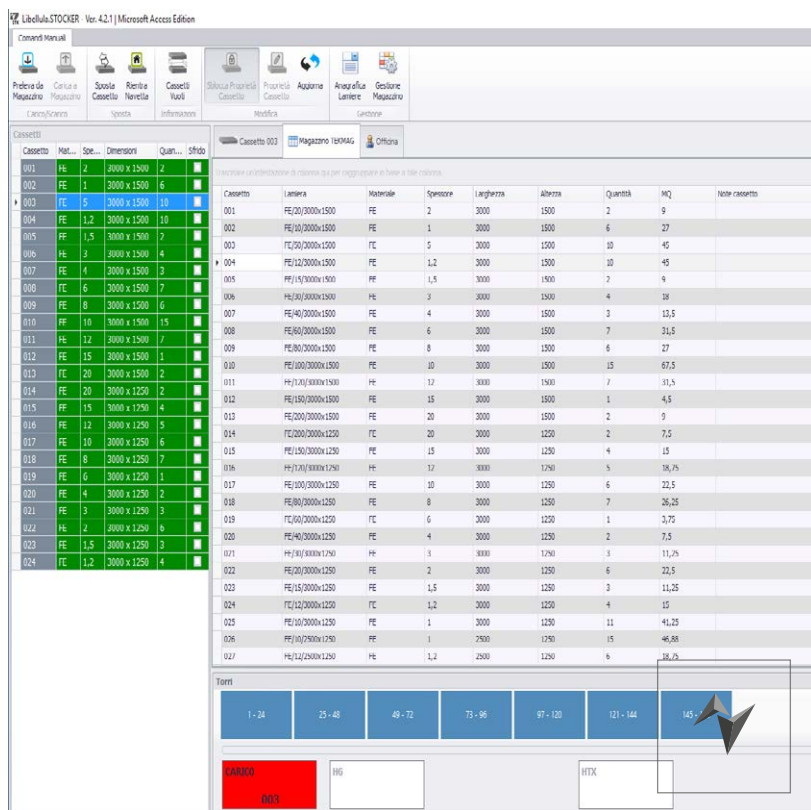


Libellula.STOCKER



Warehouse management sheets in “real time”

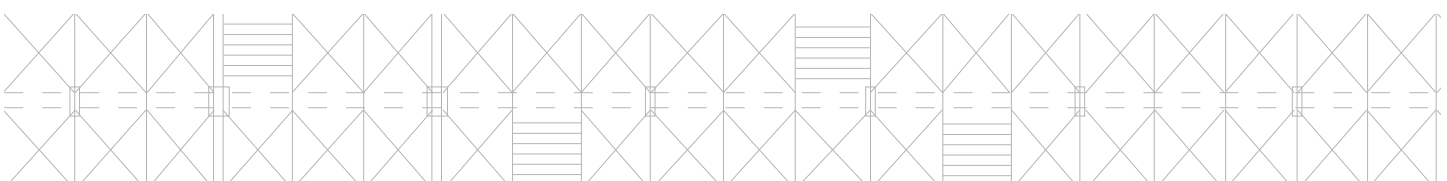




Automation, speed, efficiency never seen in the warehouse

Managing the warehouse sheets in a totally automated and in real time thanks to a channel that communicates with the rest of the management system: this is Libellula.STOCKER, one of the Libellula Universe software suite.

Libellula.STOCKER represents the direct connection between the job queue and the rolling stock, providing automated supply of the sheets which are loaded and unloaded on the fleet.

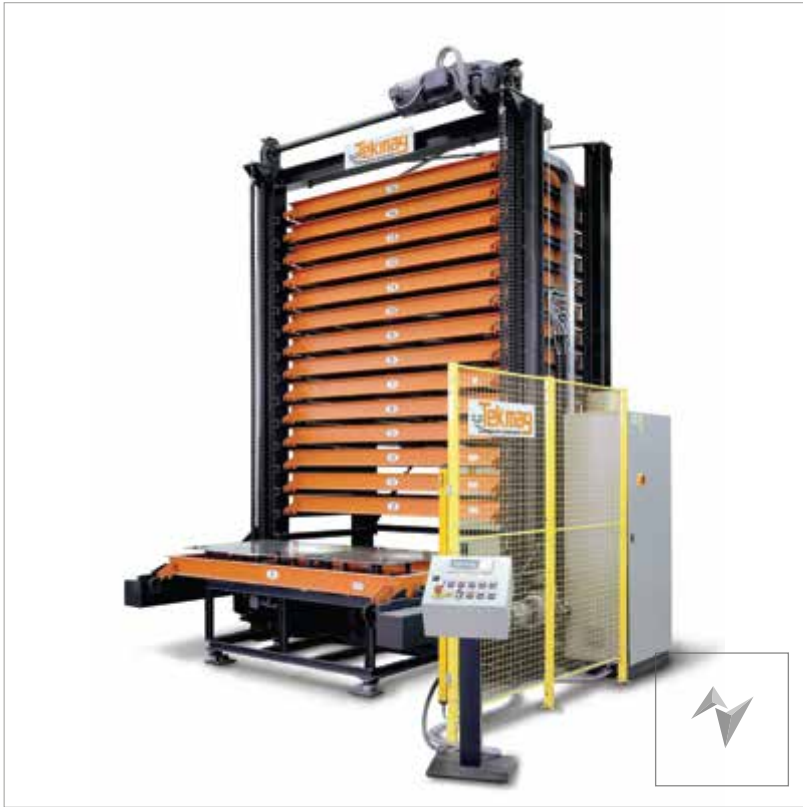


Sheet metal warehouse: automated handling, always and in any event

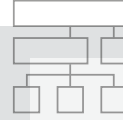
The database that makes up the core of the system, containing all of the sheets locations within the warehouse, allows Libellula.STOCKER to promptly identify the site where the materials are deposited, indispensable to initiate the processing and then send them to the cutting machines, also at night, without any supervision.

Drawers towers and fully programmable movements

Each operator can manually retrieve drawers on different configurable towers. To intuitively select the necessary drawers, the operator can modify and update their location in a few clicks, the new arrangement of the magazine within the database, obtaining the maximum control over the materials and stocks.



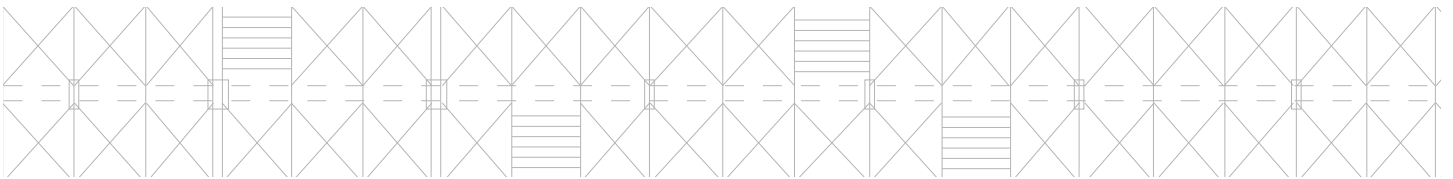
Libellula.STOCKER



MORE EFFICIENT MANAGEMENT
OF THE STOCK BECAUSE IT IS
COMPLETELY AUTOMATED



TOTAL INTEGRATION WITH OTHER
MANAGEMENT AND CUTTING SOFTWARE



Full integration with the Libellula.VISIO, mod.STORAGE and the technical department of the company

Like any other Libellula software, the mod.STOCKER totally integrates and interacts with the other software. Every time that a process has been completed or a batch of metal sheets has been picked up to be sent to the cutting stations, STOCKER will automatically update the situation of centralised inventory, by sharing the data with the mod.STORAGE of Libellula.

In this way the workshop and technical office always remain connected and can provide an excellent, efficient and realistic programming.

Technical Features

- ✔ Automatic handling of the metal sheets
- ✔ Programming drawers towers and movements
- ✔ Starting cuts at night
- ✔ Control of multiple machines simultaneously, providing the updating of overall material inventory



Microsoft Partner
Silver Application Development

Libellula S.r.l. - Headquarters

Via Savigliano 6/B/1 - 12062 Cherasco (CN) - Italy | Tel. +39 (0) 172 491834 - contact@libellula.eu

www.libellula.eu

